

## Instructions to Access Wireless Network

Sacramento City College – Information Technology Division

The SCC HotSpot wireless network is available throughout the campus. See list of locations below. In order to access the HotSpot network you need to be a faculty, staff or active student in the Los Rios Community College District. Before you attempt to connect, please verify that you meet the minimum requirements (listed below) and that you have established your username/password.

Auditorium(excluding A1-A6)	Business	City Café	Cosmetology
College Store	Hughes Stadium- Field Only	Lillard Hall	Learning Resource Center
Mohr Hall	Rodda North	Rodda South	Student Center
South Gym	Technology	Temporary 3	Davis Center
Downtown Center	West Sacramento Center	Quad	Fountain Area

### Requirements

- Wireless Network Card - 802.11b/g, 802.11g is preferred
- You must be in the area of wireless coverage, see map above.
- Registered student at any of the colleges in the Los Rios Community District
- Faculty or Staff member of the Los Rios Community College District
- Know your LRCCD domain username and password. This is the same password you use to access eServices.

### What username and password do I use?

Each employee and student of the Los Rios Community College District has a unique Windows based login. The username is W+StudentID. For example, if my student number is "9999999" then my username would be W9999999. On March 15, 2009, you now login to eServices, Consumer River College student computer labs, and the hotspot using the same username and password.


If you haven't reset your password since March 15, 2009, you will need to reset your password by following the onscreen instructions at <https://www.losrios.edu/password>.

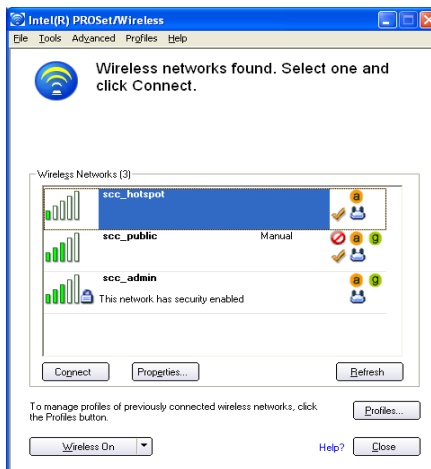
For more information regarding the recent password changes, how to change your password, and hints on picking a good password, see the Login and Password Issues section of the eServices Support Center Page at [http://www.losrios.edu/lrc/eserv\\_faq.html](http://www.losrios.edu/lrc/eserv_faq.html)

**Security:** Wireless traffic over the HotSpot network is unencrypted, and susceptible to eavesdropping. Any sensitive data transfers (online banking, etc.) should be encrypted using SSL, and you should keep your system protected with a personal firewall and antivirus software.

**Acceptable Use:** The Los Rios Community College District offers the wireless network to students, faculty and staff. Please adhere to all District policies related to computer use when utilizing this service. The policies and regulation are outlined in section 7800. More information can be found at <http://www.losrios.edu/legal/Regulations/R-7000/R-7811.htm>.

## Connect to the HotSpot Wireless Network

**Step 1: Connect to the wireless network named “scc\_hotspot”.** Specific instructions on how to connect are different based your operating system (Mac OS X, Windows XP, Windows Vista, etc) and your wireless manager. The screen below is based on Windows XP. Double-click your wireless manager  on the system tray. Select the scc\_hotspot network and click “Connect”.



**Step 2: Enter your username (W+StudentID) and password.** If you don't know your username and password go to the “What username and password do I use?” above.



**Step 3: If you successfully logged on, you will see the “Authentication Success” page.** You are now on the HotSpot network. You are able to browse the internet.

**Not getting this page?** If you have trouble logging on, go to the Password Reset page to establish your password, <http://www.losrios.edu/password>

